

California Art Tile in Curtis Park

Erik Fay's Photo Tour

Photos by Rudy Calpo

(stay tuned for more photos to be added in the future)

SPANISH REVIVAL HOUSE, EAST CURTIS DRIVE, CA. 1924

Tiles likely produced by California Faience Tile of Berkeley
(the firm also produced tiles for Hearst Castle in San Simeon)



Entry niche tile



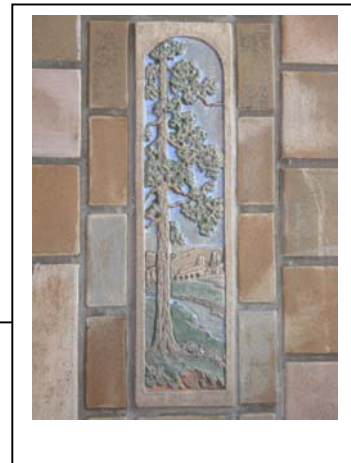
Dining room niche

TUDOR REVIVAL HOUSE, CURTIS WAY, 1928

Art tile fireplace, likely Muresque Tiles of Oakland



Covered wagon scene

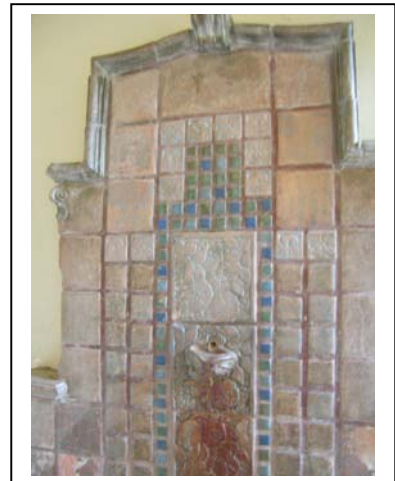


MEDITERRANEAN REVIVAL HOUSE, MONTGOMERY WAY, CA. 1924

Art tiles most likely manufactured by California Clay Products of South Gate, Batchelder Tile Company (Los Angeles), or Muresque Tiles (Oakland)



Peacocks on fountain



Foyer fountain details



OLD SAFEWAY BUILDING, FRANKLIN & 4TH AVE, CA. LATE 1920S

Rare "Spanish Deco" tiles, possibly manufactured by Malibu Potterier or American Encaustic Tiling Company



SIERRA 2 CENTER, THEATER, 24TH STREET, 1922

Tiles possibly manufactured by Solon and Schemmel (S&S) of San Jose. The company sold tiles to many important architectural firms in Palo Alto, San Francisco, and Sacramento. Several examples of their company's tile are visible in Curtis Park homes and downtown and midtown commercial buildings.

